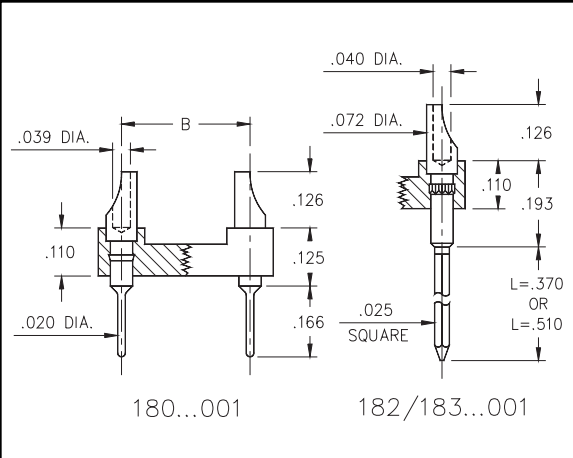




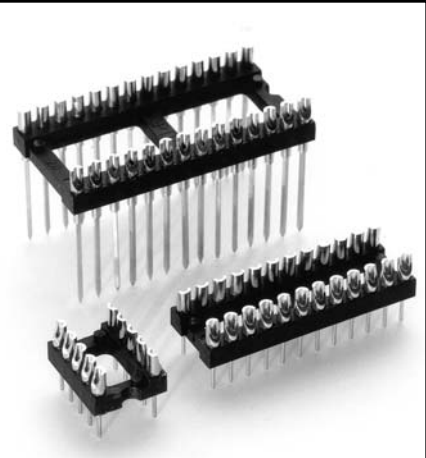
DUAL-IN-LINE SOLDER CUP HEADERS

Solder Tail and Wrapost Open Frame

Series 180, 182, 183



- Series 180, 182, and 183 DIL Headers are equipped with solder cups for wiring applications.
- Series 180 terminations are pluggable .020" dia. solder tails MM #8000, See page 174 for details. Series 182 and 183 terminations are two or three level wrapposts MM #8301. See page 184 for details.
- Insulators are high temperature thermoplastic.



Total number of pins				Quantity per tube	Ordering Information <i>XX=Plating Code See Below</i> <i>For RoHS compliance select \diamond plating code.</i>		
	A	B	C		Solder Tail	2 Level Wrappost L = .370	3 Level Wrappost L = .510
10	0.5	0.2	0.3	41	180-XX-210-00-001000	182-XX-210-00-001000	183-XX-210-00-001000
4	0.2	0.3	0.4	102	180-XX-304-00-001000	182-XX-304-00-001000	183-XX-304-00-001000
6	0.3	0.3	0.4	67	180-XX-306-00-001000	182-XX-306-00-001000	183-XX-306-00-001000
8	0.4	0.3	0.4	50	180-XX-308-00-001000	182-XX-308-00-001000	183-XX-308-00-001000
10	0.5	0.3	0.4	40	180-XX-310-00-001000	182-XX-310-00-001000	183-XX-310-00-001000
14	0.7	0.3	0.4	28	180-XX-314-00-001000	182-XX-314-00-001000	183-XX-314-00-001000
16	0.8	0.3	0.4	25	180-XX-316-00-001000	182-XX-316-00-001000	183-XX-316-00-001000
18	0.9	0.3	0.4	22	180-XX-318-00-001000	182-XX-318-00-001000	183-XX-318-00-001000
20	1.0	0.3	0.4	20	180-XX-320-00-001000	182-XX-320-00-001000	183-XX-320-00-001000
22	1.1	0.3	0.4	18	180-XX-322-00-001000	182-XX-322-00-001000	183-XX-322-00-001000
24	1.2	0.3	0.4	16	180-XX-324-00-001000	182-XX-324-00-001000	183-XX-324-00-001000
28	1.4	0.3	0.4	14	180-XX-328-00-001000	182-XX-328-00-001000	183-XX-328-00-001000
20	1.0	0.4	0.5	20	180-XX-420-00-001000	182-XX-420-00-001000	183-XX-420-00-001000
22	1.1	0.4	0.5	18	180-XX-422-00-001000	182-XX-422-00-001000	183-XX-422-00-001000
24	1.2	0.4	0.5	16	180-XX-424-00-001000	182-XX-424-00-001000	183-XX-424-00-001000
28	1.4	0.4	0.5	14	180-XX-428-00-001000	182-XX-428-00-001000	183-XX-428-00-001000
32	1.6	0.4	0.5	12	180-XX-432-00-001000	182-XX-432-00-001000	183-XX-432-00-001000
24	1.2	0.6	0.7	16	180-XX-624-00-001000	182-XX-624-00-001000	183-XX-624-00-001000
28	1.4	0.6	0.7	14	180-XX-628-00-001000	182-XX-628-00-001000	183-XX-628-00-001000
32	1.6	0.6	0.7	12	180-XX-632-00-001000	182-XX-632-00-001000	183-XX-632-00-001000
36	1.8	0.6	0.7	11	180-XX-636-00-001000	182-XX-636-00-001000	183-XX-636-00-001000
40	2.0	0.6	0.7	10	180-XX-640-00-001000	182-XX-640-00-001000	183-XX-640-00-001000
42	2.1	0.6	0.7	9	180-XX-642-00-001000	182-XX-642-00-001000	183-XX-642-00-001000
48	2.4	0.6	0.7	8	180-XX-648-00-001000	182-XX-648-00-001000	183-XX-648-00-001000
50	2.5	0.6	0.7	8	180-XX-650-00-001000	182-XX-650-00-001000	183-XX-650-00-001000
52	2.6	0.6	0.7	7	180-XX-652-00-001000	182-XX-652-00-001000	183-XX-652-00-001000
50	2.5	0.9	1.0	8	180-XX-950-00-001000	182-XX-950-00-001000	183-XX-950-00-001000
52	2.6	0.9	1.0	7	180-XX-952-00-001000	182-XX-952-00-001000	183-XX-952-00-001000
64	3.2	0.9	1.0	6	180-XX-964-00-001000	182-XX-964-00-001000	183-XX-964-00-001000
SPECIFY PLATING CODE XX=					10 \diamond	90	40 \diamond
Pin Plating					10 μ " Au	200 μ " Sn/Pb	200 μ " Sn